

From: Nancy Ranner nranner@nfmri.org.au
Subject: NFMRI releases impact report on grants awarded between 2013-2019
Date: 14 September 2021 at 9:00 am
To: npiche@nfmri.org.au



Alzheimer's disease applications now open

[View this email in your browser](#)

National Foundation for Medical Research and Innovation



NFMRI releases strategy impact report (2013-2019)

Impact review finds that 62% of supported projects attracted next-step partners and leveraged funding of over \$45m

In 2013, the Board of the National Foundation for Medical Research and Innovation (NFMRI) made the decision to focus on a specific strategy of assisting biomedical research to cross the 'valley of death' and attract next-step partners. Introducing a new untested strategy was a bold decision that would enable the Foundation to test approaches that had the potential to benefit the Australian medical research sector, but more importantly the community.

After supporting a significant number of projects across Australia addressing various diseases and conditions, we have moved beyond a growing number of case studies to being able to analyse the effectiveness of the strategy.

Today, NFMRI released its [Strategic Impact Report](#) covering grants awarded during 2013-2019. Analysing results from grants awarded following the introduction of this strategy, the report found that:

- 62% of projects supported by NFMRI attained next-step partners
- Five projects are in active clinical trials and one project is already delivering benefits to cancer patients
- Financial return on investment of more than 10:1 for next-step funding –

- Financial return on investment of more than 10:1 for next step funding representing a leverage of over \$45 million



Alzheimer's disease grant round

Through our partnership with The Mason Foundation (managed by Equity Trustees), NFMRI will continuously be accepting expressions of interest for research into Alzheimer's disease, subject to available funds. Expressions of interest may be submitted at any time and will be reviewed in line with the next cut-off date once received. All three portfolios are open, with preference for projects that fall within portfolios 2 and 3. A key aspect of portfolios 2 and 3 is accessing external capability to undertake critical research with high translational value.

We strongly encourage women to apply and for the researcher leading the project day-to-day to be listed as the chief investigator, including mid-career researchers. The focus of our reviews will be on the innovation and its potential

of successfully securing the relevant next-step partner.

Funding opportunities are now open, with the next cut-off dates for Alzheimer's disease EOIs as follows:

- **6pm AEST, 14 October 2021** - Funding announcements expected to be made in August 2022.
- **6pm AEST, 21 March 2022** - Funding announcements expected to be made in November 2022.

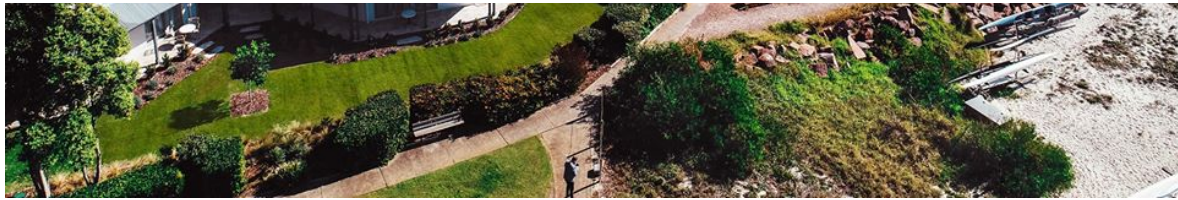
Further cut-off dates may be announced in the future subject to available funding. The EOI form is available on our [website here](#).

We wish to thank The Mason Foundation (managed by Equity Trustees) for their generous support towards Alzheimer's disease research.



2021 NFMRI Conference Postponed





NFMRI's fifth conference, Research with Purpose 2021, has been postponed due to ongoing border restrictions. Instead, we will be holding the conference on 22nd-24th of November 2022 at [The Anchorage Hotel & Spa](#) in Port Stephens, New South Wales (approximately 30 minutes from Newcastle).

We will be updating and releasing the program in early 2022. We apologise for any inconvenience caused and look forward to seeing you at our event next year.

Partnering with NFMRI

NFMRI is always happy to consider partnership opportunities with other foundations, trusts, organisations or individuals looking to support innovative medical research in Australia and achieve greater outcomes from their funding. We are able to work within the disease and geographic parameters of our partners to collectively support new programs focussing on translation. This can better enable academic research outcomes, discoveries and innovations to move beyond academia and attract next stage partners including government, industry and venture capital. These partners have the expertise, capability and capacity to take research to the next stage, navigate the complex regulatory and approval systems and enable access to those in the community who are in need sooner.

NATIONAL FOUNDATION FOR MEDICAL RESEARCH AND INNOVATION

Partnering for success

NFMRI partners with funders of medical research to create impact

Supporting Medical Research
Advancing Innovation
Enabling Collaboration

A focus on creating impact

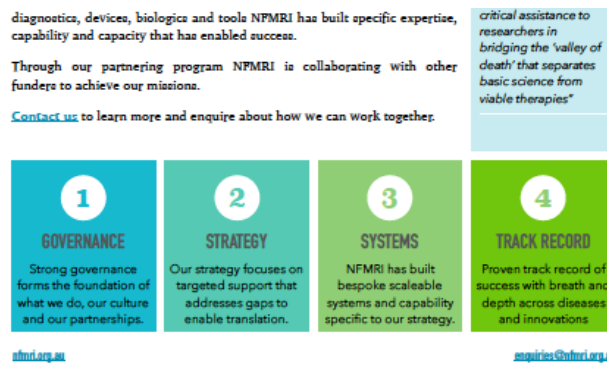
NFMRI partners with other funders, applying its strategy, systems, networks and expertise to achieve common goals.

Founded in 1977 and with DGR1 status the National Foundation for Medical Research and Innovation (NFMRI) has an established partnering program assisting other funders of medical research achieve better outcomes.

Supporting medical research that is important in the translation of discoveries leading to new innovations including; medicines, vaccines,

Professor Janet Davies
"NFMRI can foster a culture that enhances commercial uptake of our biomedical innovations, mentor academic inventors and facilitate connections between academia, philanthropy and commercial sectors"

A. Prof Bernard Flynn
"NFMRI provides



NFMRI focuses strictly on supporting early stage biomedical innovations (drugs, vaccines, devices, diagnostics, biologicals and tools) advancements to cross the 'valley of death'. Our processes, systems capability and capacity have been purpose built to support a unique strategy and deliver impact by assisting publicly funded research organisations to attract next stage partners along the innovation pathway.

This strategy and support has already prevented a number of research projects from withering-on-the-vine. These projects have attracted next stage partners, secured investment and entered clinical trials across a number of diseases and innovations.

Based upon a framework of good governance, scalable systems and reproducible evidence of success, NFMRI established a targeted partnering program to assist other well-governed funders of research access our capability and capacity. Every dollar put towards our partnerships is distributed to innovative projects that meet the objectives of both NFMRI and the partner.

If your organisation would like to discuss a potential partnership further, please don't hesitate to contact Dr Noel Chambers by emailing enquiries@nfmri.org.au

Recent blog posts

- [Measuring for success](#)
- [More than \\$1.6m in research funding announced](#)
- [From evidence to practice: exploring translational pathways for clinical medical science and public health research](#)
- [Increasing capacity and expanding capabilities using technology](#)

- [A for-purpose view of supporting research translation towards impact](#)



*Copyright © *2021 National Foundation for Medical Research and Innovation, All rights reserved.*

Our mailing address is:

PO Box 6247, Highton VIC 3216
Level 12, 20 Martin Place, Sydney 2000

Want to change how you receive these emails?

You can [update your preferences](#) or [unsubscribe from this list](#).

www.nfmri.org.au | enquiries@nfmri.org.au