

Alzheimer's disease project announced and grant round closing soon

[View this email in your browser](#)

National Foundation for Medical Research and Innovation



Save the date: NFMRI's 2024 Conference



NFMRI's sixth conference, [Research with Purpose 2024](#), will be taking place on the 26th-28th of November 2024 at the [Tangalooma Island Resort](#) in Queensland (75 minute ferry from Brisbane Airport wharf).

More information, including a draft program, registrations, sponsorship opportunities and room reservations will be announced in the later half of 2023.

New Alzheimer's disease grant announced

NFMRI recently approved the following Alzheimer's disease grant thanks to generous support from The Mason Foundation (managed by Equity Trustees).

Dr Jenna Ziebell, University of Tasmania, \$264,485 over two years

Alternate drivers of Alzheimer's disease: Are microglia the problem?

Project description: "Recent studies suggest microglia are highly associated with Alzheimer's disease and could potentially be the initiators of disease. This research aims to understand if microglia are genetically programmed to drive Alzheimer's disease (AD) progression. Dr. Ziebell and her team's innovative research plan will investigate whether transplanting microglia from "healthy" mice diminishes disease burden. Furthermore, they will examine whether transplanting microglia from "Alzheimer's disease" mice changes neuropathology with ageing. This study design will investigate these factors in both biological sexes. This project is funded in partnership between The Mason Foundation (managed by Equity Trustees) and NFMRI."

Please note: we are accepting EOIs for Alzheimer's disease projects submitted before 6pm (AEST) on Thursday, 30 June 2023. More information about our ongoing funding round can be found on our website [here](#).



Upcoming presentation

Thursday, 18 May - Griffith University Nathan Campus, Gold Coast, QLD

Speaker request form: Those wishing to invite Dr. Chambers to deliver a presentation should complete [this form](#). When possible and convenient, we are happy to consider opportunities to present at conferences, research institutions and universities, philanthropic functions and other relevant events. Presentations outlining our processes and strategy with a view to improving applications/success rates of grant submissions, what funders are looking for and engaging with industry may be relevant.

Partnering with NFMRI

NFMRI is always happy to consider partnership opportunities with other foundations, trusts, organisations or individuals looking to support innovative medical research in Australia and achieve greater outcomes from their funding. We are able to work within the disease and geographic parameters of our partners to collectively support new programs focussing on translation. This can better enable academic research outcomes, discoveries and innovations to move beyond academia and attract next stage partners including government, industry and venture capital. These partners have the expertise, capability and capacity to take research to the next stage, navigate the complex regulatory and approval systems and enable access to those in the community who are in need sooner.



NATIONAL FOUNDATION FOR MEDICAL RESEARCH AND INNOVATION

Partnering for success

NFMRI partners with funders of medical research to create impact

Supporting Medical Research
Advancing Innovation
Enabling Collaboration

A focus on creating impact

NFMRI partners with other funders, applying its strategy, systems, networks and expertise to achieve common goals.

Founded in 1977 and with DGR1 status the National Foundation for Medical Research and Innovation (NFMRI) has an established partnering program assisting other funders of medical research achieve better outcomes.

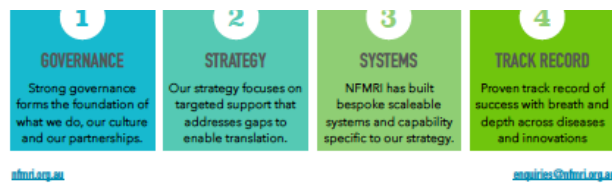
Supporting medical research that is important in the translation of discoveries leading to new innovations including; medicines, vaccines, diagnostics, devices, biologics and tools NFMRI has built specific expertise, capability and capacity that has enabled success.

Through our partnering program NFMRI is collaborating with other funders to achieve our missions.

[Contact us](#) to learn more and enquire about how we can work together.

Professor Janet Davies
"NFMRI can foster a culture that enhances commercial uptake of our biomedical innovations, mentor academic inventors and facilitate connections between academia, philanthropy and commercial sectors"

A.Prof Bernard Flynn
"NFMRI provides critical assistance to researchers in bridging the 'valley of death' that separates basic science from viable therapies"



NFMRI focuses strictly on supporting early stage biomedical innovations (drugs, vaccines, devices, diagnostics, biologicals and tools) advancements to cross the ‘valley of death’. Our processes, systems capability and capacity have been purpose built to support a unique strategy and deliver impact by assisting publicly funded research organisations to attract next stage partners along the innovation pathway.

This strategy and support has already prevented a number of research projects from withering-on-the-vine. These projects have attracted next stage partners, secured investment and entered clinical trials across a number of diseases and innovations.

Based upon a framework of good governance, scalable systems and reproducible evidence of success, NFMRI established a targeted partnering program to assist other well-governed funders of research access our capability and capacity. Every dollar put towards our partnerships is distributed to innovative projects that meet the objectives of both NFMRI and the partner.

If your organisation would like to discuss a potential partnership further, please don't hesitate to contact Dr Noel Chambers by emailing enquiries@nfmri.org.au

Recent blog posts

- [Research translation: the beginning starts with the end](#)
- [Research with purpose: thinking differently](#)
- [Inspirational women making a difference in medical research](#)



*Copyright © *2023 National Foundation for Medical Research and Innovation, All rights reserved.*

Our mailing address is:

PO Box 6247, Highton VIC 3216
Level 12, 20 Martin Place, Sydney 2000

Want to change how you receive these emails?

You can [update your preferences](#) or [unsubscribe from this list](#).

www.nfmri.org.au | enquiries@nfmri.org.au