
Register now: NFMRI's 2022 Conference

[View this email in your browser](#)

National Foundation for Medical Research and Innovation



2022 NFMRI Conference Registrations Open



NFMRI's fifth conference, Research with Purpose 2022, is taking place on the 22nd-24th of November 2022 at [The Anchorage Hotel & Spa](#) in Port Stephens, New South Wales (approximately 30 minutes from Newcastle).

To make it easier for delegates travelling from interstate and to suit various travel itineraries, the conference will commence later in the afternoon on the 22nd of November 2022 and will conclude mid-afternoon on the 24th of

November 2022. Our early bird registrations are now [open here](#).

More information about our significantly discounted [accommodation rates](#), [speaker profiles](#) and [registration terms and conditions](#) are available on our website.



The poster for the Research with Purpose 2022 Conference features a dark background with a geometric pattern of teal and grey diamonds. At the top left, there is a faint image of a medical scan. The title 'RESEARCH WITH PURPOSE 2022 CONFERENCE' is prominently displayed in white, bold, uppercase letters. Below the title, the location 'The Anchorage Hotel & Spa . Port Stephens, NSW' is written in a smaller white font. To the right of the title, there is a portrait of a man in a suit. Below the title, there are four smaller portraits of diverse individuals. On the right side of the poster, there is a vertical teal bar with the dates '22' and '24' in large white font, and 'NOVEMBER' in smaller white font between them. The NFMRI logo is in the top right corner. The bottom section of the poster contains text about the conference's purpose and intent, followed by a link to download a draft program.

**RESEARCH WITH PURPOSE
2022 CONFERENCE**

The Anchorage Hotel & Spa . Port Stephens, NSW

Our purpose is our "why". It guides our activities, strategies and intent. For many organisations, including charities, purpose relates to delivering better health outcomes for the community. The biggest funder of health and medical research in Australia is the NHMRC, which is also funded by the community through taxes. When asked, the general public believes that medical research should be funded because it helps save lives, improve health outcomes, find cures and treatments for diseases.

The intent is clear and consistent.

However, is our community's intent currently aligned with and being met by the medical research sector?

By accepting funding is there a social contract to prioritise intent.

This year's conference will explore benefits, harm and wastage in the medical research ecosystem and how together we can lead cultural and systems change in order to do better. It will also focus on ways the sector can improve efficiencies and communication with various stakeholders, including the general community. Because success relies on harnessing many skill sets across various sectors including research, industry, investors, government and philanthropy, the conference will focus on the role each of these play in achieving outcomes.

www.nfmri.org.au

[Download a copy of our draft program by clicking here](#)

NFMRI Conference Sponsorship Opportunities

A number of sponsorship opportunities for our 2022 Conference are available.

[Please click here to download a copy of our proposal](#)

National Foundation
for Medical Research
and Innovation



SPONSORSHIP OPPORTUNITY

THE ANCHORAGE - PORT STEPHENS, NSW

22-24 NOVEMBER 2022



Medical Research & Innovation Conference "Research with Purpose 2022"

Our purpose is our "why". It guides our activities, strategies and intent. For many organisations, including charities, purpose relates to delivering better health outcomes for the community. The biggest funder of health and medical research in Australia is the NHMRC, which is also funded by the community through taxes. When asked, the general public believes that medical research should be funded because it helps save lives, improve health outcomes, find cures and treatments for diseases.

The intent is clear and consistent.

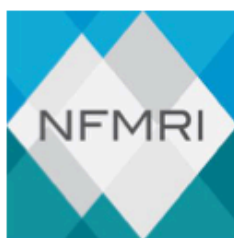
However, is our community's intent currently aligned with and being met by the medical research sector?

By accepting funding is there a social contract to prioritise intent?

This year's conference will explore benefits, harm and wastage in the medical research ecosystem and how together we can lead cultural and systems change in order to do better. It will also focus on ways the sector can improve efficiencies and communication with various stakeholders, including the general community. Because success relies on harnessing many skills sets across various sectors including research, industry, investors, government and philanthropy, the conference will focus on the role each of these play in achieving outcomes.

1

2021 NFMRI Annual Report





[Download 2021 Annual Report](#)

Recently released, our 2021 Annual Report showcases some of our success stories achieved over recent years thanks to our partners and supporters.

Partnering with NFMRI

NFMRI is always happy to consider partnership opportunities with other foundations, trusts, organisations or individuals looking to support innovative medical research in Australia and achieve greater outcomes from their funding. We are able to work within the disease and geographic parameters of our partners to collectively support new programs focussing on translation. This can better enable academic research outcomes, discoveries and innovations to move beyond academia and attract next stage partners including government, industry and venture capital. These partners have the expertise, capability and capacity to take research to the next stage, navigate the complex regulatory and approval systems and enable access to those in the community who are in need sooner.

A poster titled 'Partnering for success' from the National Foundation for Medical Research and Innovation (NFMRI). The poster features a blue header with the NFMRI logo and the text 'NFMRI partners with funders of medical research to create impact'. Below the header is a diagram showing a funnel of research stages: Concept & Discovery, Basic Research, Applied Research, Proof of Concept, Preclinical, Reproductive Studies, and Translational Research. To the right of the diagram is a photo of a person working in a lab with the text 'Supporting Medical Research Advancing Innovation Enabling Collaboration'. Below the diagram is a quote from Professor Janet Davies: 'NFMRI can foster a culture that enhances commercial uptake of our biomedical innovations, mentor academic inventors and facilitate connections between academia, philanthropy and commercial sectors'. At the bottom is a quote from A.Prof Bernard Flynn: 'NFMRI provides critical assistance to researchers in bridging the valley of'.

NATIONAL FOUNDATION FOR MEDICAL RESEARCH AND INNOVATION

Partnering for success

NFMRI partners with funders of medical research to create impact

Supporting Medical Research
Advancing Innovation
Enabling Collaboration

A focus on creating impact

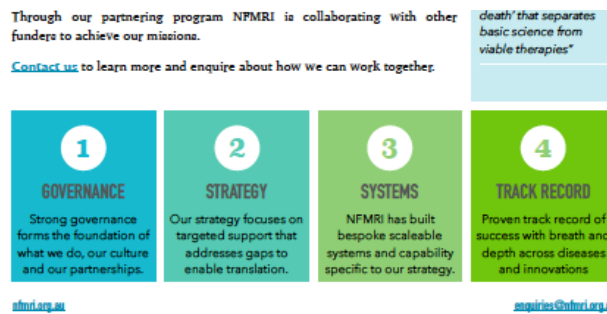
NFMRI partners with other funders, applying its strategy, systems, networks and expertise to achieve common goals.

Founded in 1977 and with DGR1 status the National Foundation for Medical Research and Innovation (NFMRI) has an established partnering program assisting other funders of medical research achieve better outcomes.

Supporting medical research that is important in the translation of discoveries leading to new innovations including; medicines, vaccines, diagnostics, devices, biologics and tools NFMRI has built specific expertise, capability and capacity that has enabled success.

Professor Janet Davies
"NFMRI can foster a culture that enhances commercial uptake of our biomedical innovations, mentor academic inventors and facilitate connections between academia, philanthropy and commercial sectors"

A.Prof Bernard Flynn
"NFMRI provides critical assistance to researchers in bridging the 'valley of'"



NFMRI focuses strictly on supporting early stage biomedical innovations (drugs, vaccines, devices, diagnostics, biologicals and tools) advancements to cross the 'valley of death'. Our processes, systems capability and capacity have been purpose built to support a unique strategy and deliver impact by assisting publicly funded research organisations to attract next stage partners along the innovation pathway.

This strategy and support has already prevented a number of research projects from withering-on-the-vine. These projects have attracted next stage partners, secured investment and entered clinical trials across a number of diseases and innovations.

Based upon a framework of good governance, scalable systems and reproducible evidence of success, NFMRI established a targeted partnering program to assist other well-governed funders of research access our capability and capacity. Every dollar put towards our partnerships is distributed to innovative projects that meet the objectives of both NFMRI and the partner.

If your organisation would like to discuss a potential partnership further, please don't hesitate to contact Dr Noel Chambers by emailing enquiries@nfmri.org.au

Recent blog posts

- [Supporting research across the valley of death: NFMRI's strategic impact report](#)
- [More than \\$1.1m of medical research innovations funded by NFMRI and partners](#)
- [Impact review finds 62% of supported projects attract next-step partners leveraging over \\$45million](#)



*Copyright © *2022 National Foundation for Medical Research and Innovation, All rights reserved.*

Our mailing address is:

PO Box 6247, Highton VIC 3216
Level 12, 20 Martin Place, Sydney 2000

Want to change how you receive these emails?

You can [update your preferences](#) or [unsubscribe from this list](#).

www.nfmri.org.au | enquiries@nfmri.org.au