
2025 grant rounds closing at 6pm AEDT on Friday, 28 March 2025

[View this email in your browser](#)

National Foundation for Medical Research and Innovation



NFMRI congratulates its CEO, Dr. Noel Chambers, on his recent appointment as a member of the NHMRC/MRFF Industry, Philanthropy and Commercialisation Committee.

NFMRI's 2025 General Grant Round Closing Soon

Our 2025 general grant round is open and will be closing at 6pm AEDT on

Our 2025 general grant round is open and will be closing at 5pm AEST on Friday, 28 March 2025. Our general grant round is open nationally and seeks to support biomedical research covering all diseases and conditions.

[Click here](#) for more information about our grant rounds

[Click here](#) for our online expression of interest form

[Click here](#) to view an example of our complete EOI form for reference only

Those wishing to invite our CEO, Dr. Noel Chambers, to deliver a presentation at their institution should complete the [speaker request form](#) as soon as possible as the 2025 diary is quickly filling up.

Our recent and upcoming presentations include:

- University of Newcastle (NSW) – 22nd January 2025 (complete)
- Griffith University (QLD) – 3rd February 2025 (complete)
- University of Sunshine Coast (QLD) – 5th February 2025 (complete)
- Deakin University (VIC) – 24th February 2025 (complete)
- Olivia Newton-John Cancer Research Institute (VIC) – 27th February 2025 (complete)
- Monash Clayton (VIC) – 26th February 2025 (complete)
- University of Tasmania (TAS) – 28th February 2025 (complete)
- University of Wollongong (NSW) – May 2025 (date tbc)
- TRI (QLD) – 15th July 2025
- Flinders University (SA) – 11th November 2025
- University of Adelaide (SA) – 12th November 2025

NFMRI welcomes feedback from applicants on their funding application experience via [this survey link](#).

Alzheimer's disease grant round open

As part of our partnership with The Mason Foundation (managed by Equity Trustees), NFMRI is seeking EOIs for Alzheimer's disease research projects. We strongly encourage women to apply and for the researcher leading the project day-to-day to be listed as the Chief Investigator, including mid-career researchers

researchers.

Focus: Alzheimer's disease applications that fall within portfolios 1, 2 & 3 (preference for 2 & 3), open nationally.

EOIs will be accepted until 6pm **AEDT on Friday, 28 March 2025**.

[Click here](#) for more information about our grant rounds

[Click here](#) for our online expression of interest form

[Click here](#) to view an example of our complete EOI form for reference only

Thank you to our generous partners for supporting this grant round:



2023 Annual Report



ANNUAL REPORT

Our 2023 Annual Report has recently been released. [Please click here](#) to read more about our impact to date.

Partnering with NFMRI

NFMRI is always happy to consider partnership opportunities with other foundations, trusts, organisations or individuals looking to support innovative medical research in Australia and achieve greater outcomes from their funding. We are able to work within the disease and geographic parameters of our partners to collectively support new programs focussing on translation. This can better enable academic research outcomes, discoveries and innovations to move beyond academia and attract next stage partners including government, industry and venture capital. These partners have the expertise, capability and capacity to take research to the next stage, navigate the complex regulatory and approval systems and enable access to those in the community who are in need sooner.

NATIONAL FOUNDATION FOR MEDICAL RESEARCH AND INNOVATION

Partnering for success

NFMRI partners with funders of medical research to create impact



Supporting Medical Research
Advancing Innovation
Enabling Collaboration

A focus on creating impact

NFMRI partners with other funders, applying its strategy, systems, networks and expertise to achieve common goals.

Founded in 1977 and with DGR1 status the National Foundation for Medical Research and Innovation (NFMRI) has an established partnering program assisting other funders of medical research achieve better outcomes.

Supporting medical research that is important in the translation of discoveries leading to new innovations including; medicines, vaccines, diagnostics, devices, biologics and tools NFMRI has built specific expertise, capability and capacity that has enabled success.

Through our partnering program NFMRI is collaborating with other funders to achieve our missions.

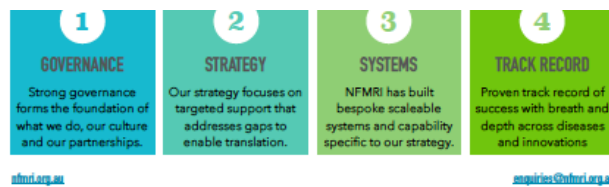
[Contact us](#) to learn more and enquire about how we can work together.



Professor Janet Davies
"NFMRI can foster a culture that enhances commercial uptake of our biomedical innovations, mentor academic inventors and facilitate connections between academia, philanthropy and commercial sectors"



A.Prof Bernard Flynn
"NFMRI provides critical assistance to researchers in bridging the 'valley of death' that separates basic science from viable therapies"



NFMRI focuses strictly on supporting early stage biomedical innovations (drugs, vaccines, devices, diagnostics, biologicals and tools) advancements to cross the ‘valley of death’. Our processes, systems capability and capacity have been purpose built to support a unique strategy and deliver impact by assisting publicly funded research organisations to attract next stage partners along the innovation pathway.

This strategy and support has already prevented a number of research projects from withering-on-the-vine. These projects have attracted next stage partners, secured investment and entered clinical trials across a number of diseases and innovations.

Based upon a framework of good governance, scalable systems and reproducible evidence of success, NFMRI established a targeted partnering program to assist other well-governed funders of research access our capability and capacity. Every dollar put towards our partnerships is distributed to innovative projects that meet the objectives of both NFMRI and the partner.

If your organisation would like to discuss a potential partnership further, please don't hesitate to contact Dr Noel Chambers by emailing enquiries@nfmri.org.au

Recent blog posts

- [Sector leaders convening in Queensland](#)
- [Research translation: the beginning starts with the end](#)
- [Research with purpose: thinking differently](#)
- [Inspirational women making a difference in medical research](#)



*Copyright © *2025 National Foundation for Medical Research and Innovation, All rights reserved.*

Our mailing address is:

PO Box 6247, Highton VIC 3216
Level 12, 44 Martin Place, Sydney 2000

Want to change how you receive these emails?

You can [update your preferences](#) or [unsubscribe from this list](#).

www.nfmri.org.au | enquiries@nfmri.org.au