

Alzheimer's disease grant round closing soon on Friday, 18
October 2024

[View this email in your browser](#)

National Foundation for Medical Research and Innovation



NFMRI's Early Bird Conference Registrations Now Open: "Research with Purpose 2024"



Register here

***Research with Purpose 2024* | 26-28 November 2024 | Tangalooma Island, Queensland**

NFMRI is pleased to be holding its sixth conference ***Research with Purpose 2024*** at [Tangalooma Island](#) (Qld) from the 26-28th November 2024. This [unique event](#) is built around Q&A panel sessions that engage highly with participants and are led by [content experts](#). The event focuses on building a culture, support and funding ecosystem where industry, government, academia, venture capital and philanthropy intersect to better support biomedical innovations from beginning to end.

We invite you to join us and be part of the discussion that helps ignite change and lead to impact. [Early bird registrations are now open](#) and **for a limited time, we are offering grant making charities and students two for one registrations.**

We have secured [discounted accommodation starting from \\$239 per night](#). The resort is accessed directly from a ferry that departs the Holt Street Wharf near Brisbane airport and the return ferry fare can be added to the room booking via [this link](#).

[Register now](#)

Draft program

We will continue updating the program on our website as additional speakers are confirmed.



INNOVATION CONFERENCE

Tangalooma Island Resort, Moreton Island, QLD

"Research with Purpose 2024"



The Conference will explore strategies and solutions to help build, support and grow the biomedical innovation sector in Australia by attracting investments and creating collaborations that help establish new companies – ultimately leading to community health benefits, better health outcomes, increased job opportunities, diversification of the workforce and new sovereign capability.

The unique networking, educational and thought leadership event brings together experts and key decision makers from various relevant sectors to help up-skill delegates and explore how financial and social investments in medical research, together with different strategies and bold actions, can lead to the advancement of innovations.

The program focuses on building a culture, support and funding ecosystem where industry, government, academia, venture capital and philanthropy intersect to support biomedical innovations from beginning to end.

26

NOVEMBER

28



www.nfmri.org.au

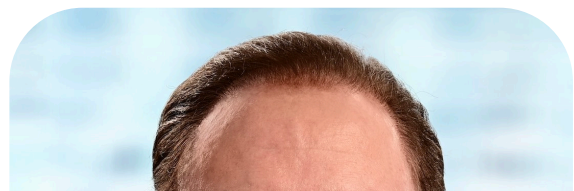
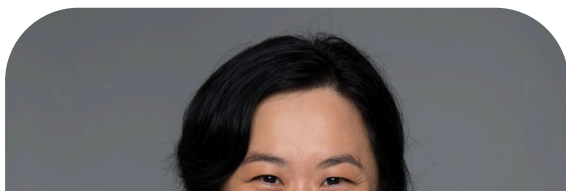
[Click here to view the draft program](#)

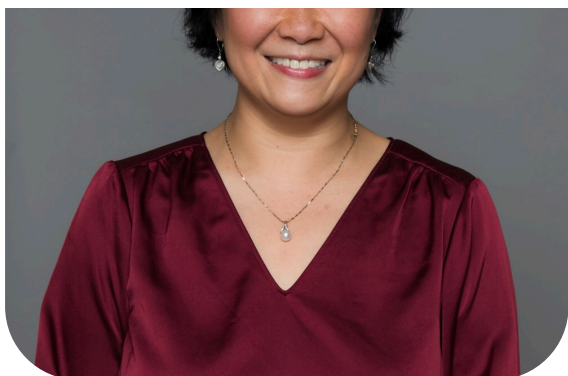
The program is accurate as of publishing date, but speakers are always subject to change due to unforeseen circumstances.

We thank Hall & Wilcox and CSL for kindly sponsoring this event.



Register here





Dr. Michelle Williams,
Strategic Partnerships
Lead, Sanofi Australia &
New Zealand



Dr. Dave Kennedy,
Founder,
igiveonepercent.org



Prof. Michael Good AO,
Institute for Biomedicine and
Glycomics, Griffith
University



Miriam Kent,
Chief Executive Officer,
Gallipoli Medical Research
Foundation





Allison Bambrick,
Executive Director, Science
Development and Office of
the Queensland Chief
Scientist, Queensland
Department of Environment,
Science and Innovation



**Emeritus Professor A. Ian
Smith,** Director and
Research Advisory
Committee Chair, National
Foundation for Medical
Research and Innovation



Kerren Hosking,
Chief Executive Officer,
Sanfilippo Children's
Foundation



Dr. Chris Davis, General
Manager, Institute for
Biomedicine and Glycomics,
Griffith University

Alzheimer's disease grant round open

As part of our partnership with The Mason Foundation (managed by Equity Trustees), NFMRI is seeking EOIs for Alzheimer's disease research projects. We strongly encourage women to apply and for the researcher leading the project day-to-day to be listed as the Chief Investigator, including mid-career

researchers.

Focus: Alzheimer's disease applications that fall within portfolios 1, 2 & 3 (preference for 2 & 3), open nationally.

EOIs will be accepted until 6pm **AEDT on Friday, 18 October 2024**, the next round will then close on Friday, 18 October 2024

[Click here](#) for more information about our grant rounds

[Click here](#) for our online expression of interest form

[Click here](#) to view an example of our complete EOI form for reference only

Thank you to our generous partners for supporting this grant round:



2023 Annual Report





Our 2023 Annual Report has recently been released. [Please click here](#) to read more about our impact to date.

Partnering with NFMRI

NFMRI is always happy to consider partnership opportunities with other foundations, trusts, organisations or individuals looking to support innovative medical research in Australia and achieve greater outcomes from their funding. We are able to work within the disease and geographic parameters of our partners to collectively support new programs focussing on translation. This can better enable academic research outcomes, discoveries and innovations to move beyond academia and attract next stage partners including government, industry and venture capital. These partners have the expertise, capability and capacity to take research to the next stage, navigate the complex regulatory and approval systems and enable access to those in the community who are in need sooner.

The poster has a blue header with the text 'NATIONAL FOUNDATION FOR MEDICAL RESEARCH AND INNOVATION' and 'Partnering for success' in white. Below this, it says 'NFMRI partners with funders of medical research to create impact'. The main body of the poster features a central image of a hand holding a test tube, with a graphic of a staircase representing the research process. To the right of the image, there are two circular portraits of Professor Janet Davies and A. Prof Bernard Flynn, each with a quote about NFMRI's impact. The bottom section contains text about NFMRI's founding in 1977 and its role in supporting medical research translation.

NATIONAL FOUNDATION FOR MEDICAL RESEARCH AND INNOVATION

Partnering for success

NFMRI partners with funders of medical research to create impact

Supporting Medical Research
Advancing Innovation
Enabling Collaboration

A focus on creating impact
NFMRI partners with other funders, applying its strategy, systems, networks and expertise to achieve common goals.

Founded in 1977 and with DGR1 status the National Foundation for Medical Research and Innovation (NFMRI) has an established partnering program assisting other funders of medical research achieve better outcomes.

Supporting medical research that is important in the translation of discoveries leading to new innovations including; medicines, vaccines, diagnostics, devices, biologics and tools NFMRI has built specific expertise, capability and capacity that has enabled success.

Through our partnering program NFMRI is collaborating with other funders to achieve our missions.

Professor Janet Davies
"NFMRI can foster a culture that enhances commercial uptake of our biomedical innovations, mentor academic inventors and facilitate connections between academia, philanthropy and commercial sectors"

A. Prof Bernard Flynn
"NFMRI provides critical assistance to researchers in bridging the 'valley of death' that separates basic science from..."



NFMRI focuses strictly on supporting early stage biomedical innovations (drugs, vaccines, devices, diagnostics, biologicals and tools) advancements to cross the 'valley of death'. Our processes, systems capability and capacity have been purpose built to support a unique strategy and deliver impact by assisting publicly funded research organisations to attract next stage partners along the innovation pathway.

This strategy and support has already prevented a number of research projects from withering-on-the-vine. These projects have attracted next stage partners, secured investment and entered clinical trials across a number of diseases and innovations.

Based upon a framework of good governance, scalable systems and reproducible evidence of success, NFMRI established a targeted partnering program to assist other well-governed funders of research access our capability and capacity. Every dollar put towards our partnerships is distributed to innovative projects that meet the objectives of both NFMRI and the partner.

If your organisation would like to discuss a potential partnership further, please don't hesitate to contact Dr Noel Chambers by emailing enquiries@nfmri.org.au

Recent blog posts

- [Sector leaders convening in Queensland](#)
 - [Research translation: the beginning starts with the end](#)
 - [Research with purpose: thinking differently](#)
 - [Inspirational women making a difference in medical research](#)
-



*Copyright © *2024 National Foundation for Medical Research and Innovation, All rights reserved.*

Our mailing address is:

PO Box 6247, Highton VIC 3216
Level 12, 44 Martin Place, Sydney 2000

Want to change how you receive these emails?

You can [update your preferences](#) or [unsubscribe from this list](#).

www.nfmri.org.au | enquiries@nfmri.org.au